
FP7 Communication Cassette(Ethernet type)
AFP7CCET1
Upgrade Procedure(1.1 Edition)

Panasonic Industrial Devices SUNX Co.,Ltd

Aug. 2016

[Please make sure to check before version upgrade.]

[Introduction]

This is the procedure manual for upgrading AFP7CCET1 to Ver1.03.

[Configuration setting]

1) Install the latest ConfiguratorWD.

The ConfiguratorWD (After Ver 1.71) is used for version upgrade. If you are using an older version than Ver1.71, please download the latest version from our website.

(Site URL http://panasonic-denko.co.jp/ac/efasys/software_info/common/tol_configwd.jsp)

2) Connect directly to a PC with an Ethernet cable.



Confirm that the Link LED of AFP7CCET1 light up.

3) Set an IP address that can be communicated with the PC.

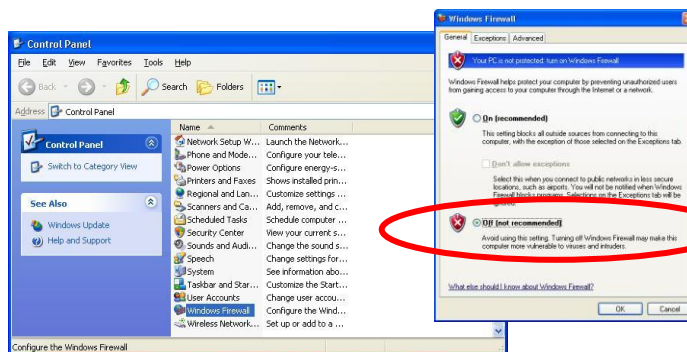
[Recommended setting]

IP address of PC : 192.168.1.100

IP address of AFP7CCET1 : 192.168.1.5

4) Disable the firewall of PC.

Start > Settings > Control Panel > Windows Firewall



Precaution

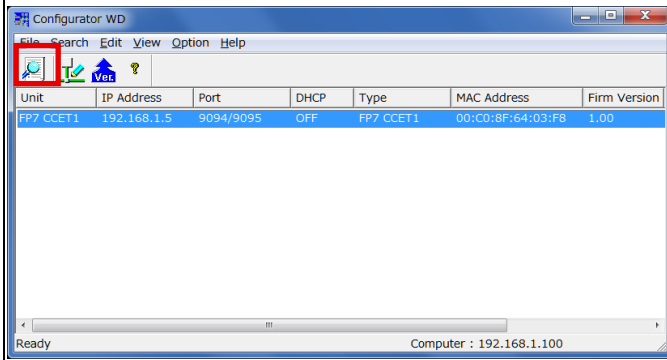
Do not unplug the cable or turn off the power supply during the upgrade!

If the upgrade is failed, programs within the AFP7CCET1 may be damaged and may not be activated.

In that case, please contact our Sales Representative.

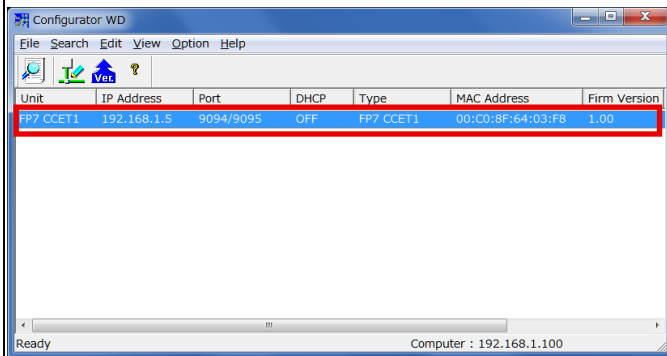
Procedure

STEP1



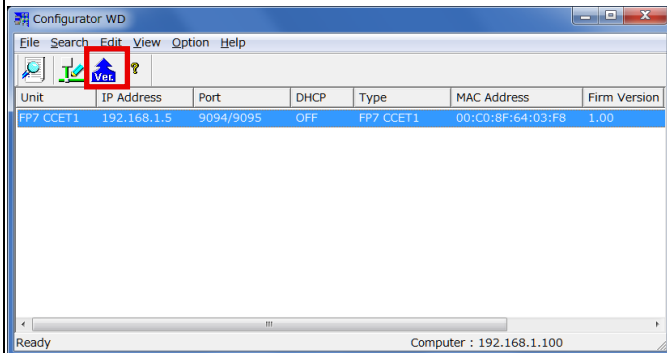
Start the ConfiguratorWD, and press the search button for searching units.

STEP2



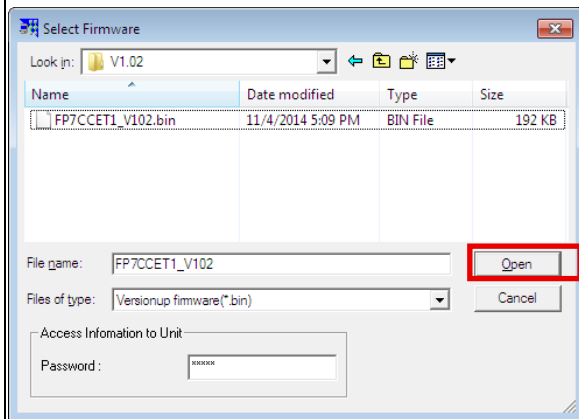
Units are displayed.
Select the unit to be upgraded.

STEP3



Press the “Ver.” Button for upgrading firmware.

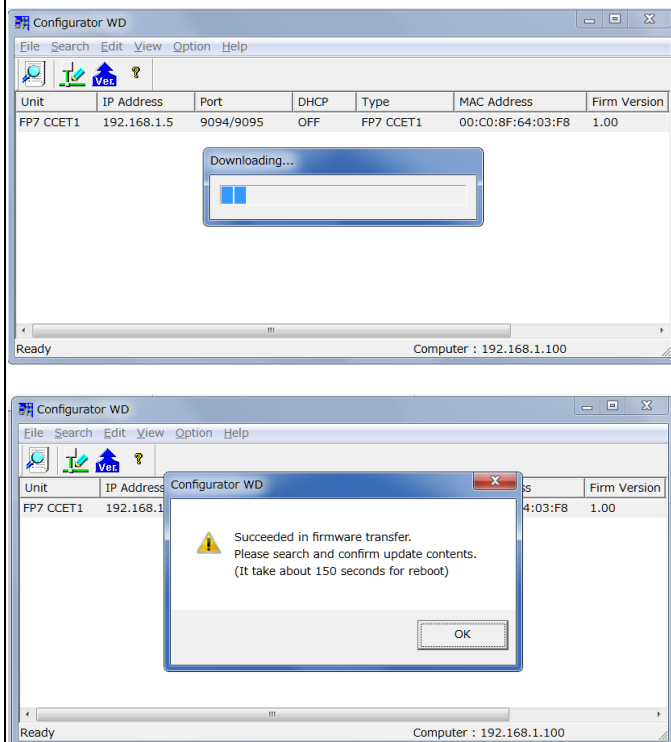
STEP4



The pop-up appears.

Select the firmware “FP7CCET1_V102.bin” for the upgrade, and press the open button.

STEP5



[The upgrade starts.]

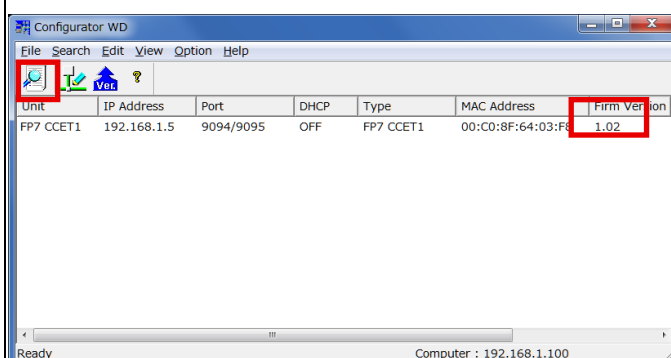
Please wait without doing any other operations.
(approx. 2 - 3 minutes)

Although the screen of ConfiguratorWD may be disturbed (freezing) during this process, please wait.

When the upgrade is complete, the completion message is displayed.

Then, LINK LED of the unit is off for a moment, the unit restart.

STEP6



Press the search button to check the version.

[The version has been upgraded]

The upgrade has been succeeded.

■The operation has completed.■

[The version has not been upgraded]

The upgrade was failed. Check the operating environment, and upgrade the unit again.

[Units cannot be found by searching with the ConfiguratorWD.]

The internal program may be damaged.

Please contact our Sales Representative.